

E1 Middle WRE (Bellver) Plan B

The middle distance race will take place on Friday, April 3 in the morning in Bellver de Cerdanya.

Mapping: Staff Xino Xano and Pau Llorens 2026

Course setting: Pau Llorens

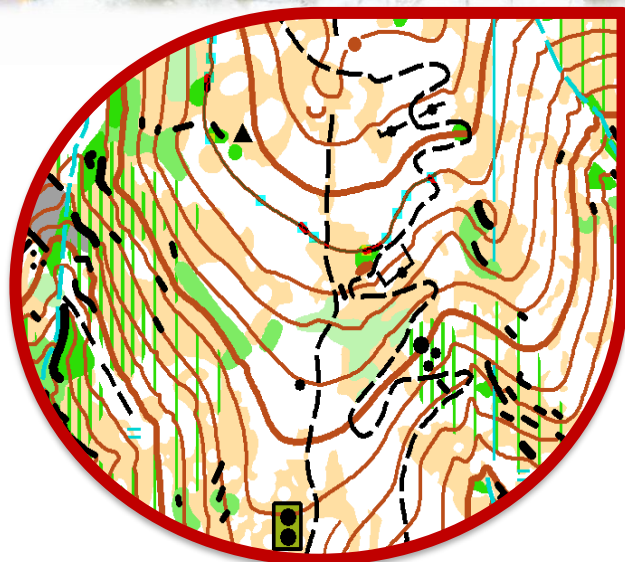
Scale and contour interval: 1:7,500 or 1:10,000 – 5 m

Start: 0,5km and 25m climb along an asphalt track.

The [start point](#) is provided so that everyone can work on their race plans.

Pre-Start: -10 minutes at the competition center.

Start times: as published in the official start list.



Maximum race time: 120 minutes

Course Setter's Notes:

For this middle distance race, the best part of the map has been selected, featuring areas of pine forest with high visibility combined with denser vegetation zones that create route choices and increase difficulty.

The map contains many detailed contour and rocky features, where athletes will need to identify the best techniques to find the controls.



Parking:

Participants of the CEOP must park in the streets of Bellver de Cerdanya, respecting traffic rules and local residents.

Access to the competition center must be on foot, following the red markings set by the organization along a small path that climbs through the main re-entrant.

- Distance from the roundabout: 850 m
- Climb: +180 m

Participants in MF70 or MF75 categories may drive up, drop people off, and return to park

Competition Center:

The finish area is located at the competition center, in a meadow with enough space for athletes' equipment (bags, chairs, etc.).

There will be 2 portable toilets available. However, participants are encouraged to arrive already changed or use the toilets at the Bellver sports hall, which will be open throughout the morning.

Distances and Climb				
Categ.	Km	m+	Contr.	Scale
ME	4,56	230	16	10,000
FE	3,64	180	14	10,000
U10	1,25	70	8	7,500
F12	1,67	90	9	7,500
F14	2,55	100	10	10,000
F16	2,79	110	11	10,000
F16-18	2,43	110	11	10,000
F18E	2,98	135	11	10,000
F20E	3,29	150	14	10,000
F21A	2,79	150	11	10,000
F21B	2,12	90	10	10,000
F35A	3,18	160	14	10,000
F35B	1,97	90	10	10,000
F40	2,76	130	12	10,000
F45	2,59	120	11	10,000
F50	2,48	100	11	10,000
F55	2,13	90	10	7,500
F60	1,69	60	10	7,500
F65	1,35	60	9	7,500
F70	1,06	45	7	7,500
F75	0,93	40	6	7,500
M12	1,95	100	12	7,500
M14	2,91	150	12	10,000
M16	3,29	160	12	10,000
M16-18	2,75	120	14	10,000
M18E	3,67	180	14	10,000
M20E	4,11	210	15	10,000
M21A	3,41	160	14	10,000
M21B	2,89	145	12	10,000
M35A	3,85	190	15	10,000
M35B	2,98	135	11	10,000
M40	3,46	170	15	10,000
M45	3,37	160	15	10,000
M50	2,97	145	12	10,000
M55	2,82	130	12	7,500
M60	2,34	120	10	7,500
M65	2,18	110	11	7,500
M70	1,85	90	11	7,500
M75	1,37	80	10	7,500
Open Amarillo	1,25	50	8	7,500
Open Naranja	1,69	80	10	7,500
Open Rojo Fem.	2,45	115	12	10,000
Open Rojo Masc.	2,45	115	12	10,000
Open Negro Fem.	3,06	160	15	10,000
Open Rojo Masc.	3,06	160	15	10,000